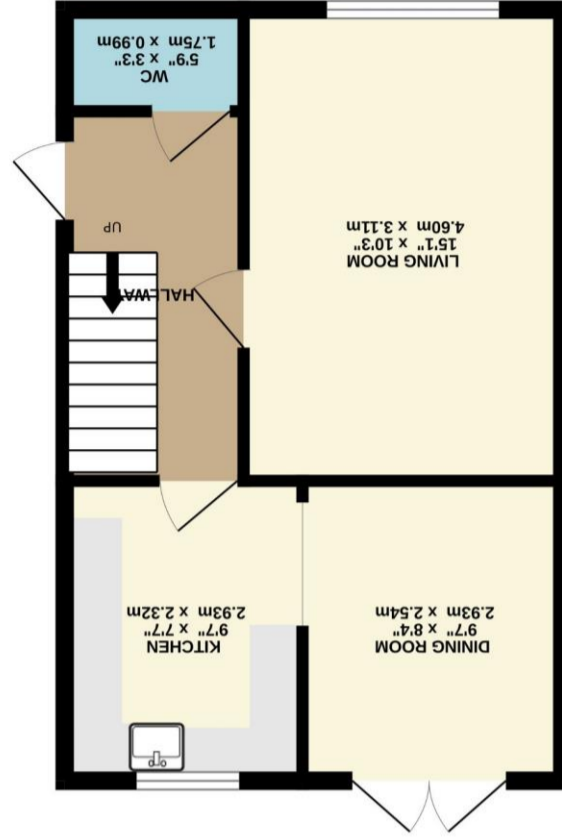
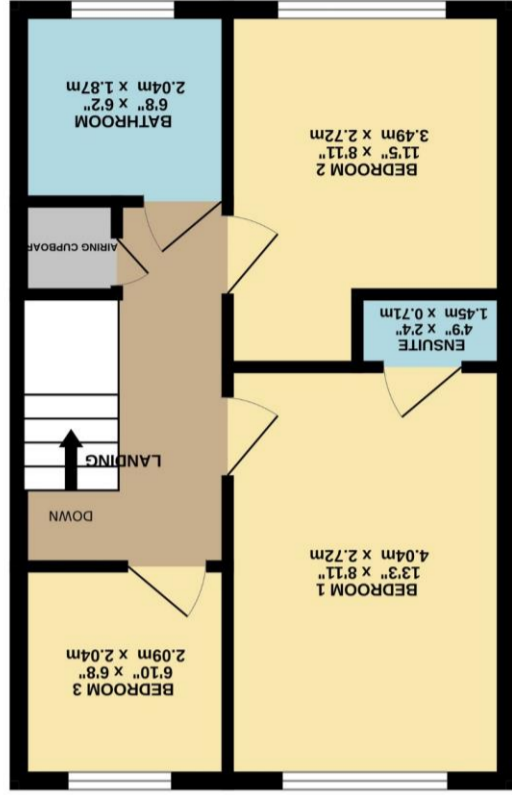


Whilst every attempt has been made to ensure the accuracy of the program contained here, measurements of doors, windows, rooms and other items are approximate and no responsibility is taken for any error, omission or mis-statement. This plan is for illustrative purposes only and should be used as such by any prospective purchaser. The services, systems and appliances shown have not been tested and no guarantee as to their operability or efficacy can be given.
 Made with Metropix ©2024



12 Wheeldale Court, Bridlington, East Yorkshire,
 YO16 6RU

Harris Shields
 Collection

3 BEDROOM END TERRACE ON NORTH SIDE OF BRIDLINGTON

- ✓ End Terrace.
- ✓ 3 Bedrooms.
- ✓ En-Suite To Master
- ✓ Downstairs Cloakroom.
- ✓ Dining Kitchen.
- ✓ Gas Central Heating.
- ✓ UPVc Double Glazing.
- ✓ Gardens Front + Rear.

Asking Price £185,000

Harris Shields Collection

Harris Shields Collection, 14 Promenade, Bridlington East Yorkshire, YO15 2PX

01262 601704

estateagents@harris-shieldscollection.uk

<https://harris-shieldscollection.uk/>

Description

Harris Shields Collection are delighted to bring to the market this end terrace 2 storey property which benefits from Gas Central Heating and UPVc Double Glazing and briefly comprises: Hallway, Living Room, Ground Floor WC, Kitchen/Diner, 3 Bedrooms (1 with En-suite Shower Room), House Bathroom and WC.

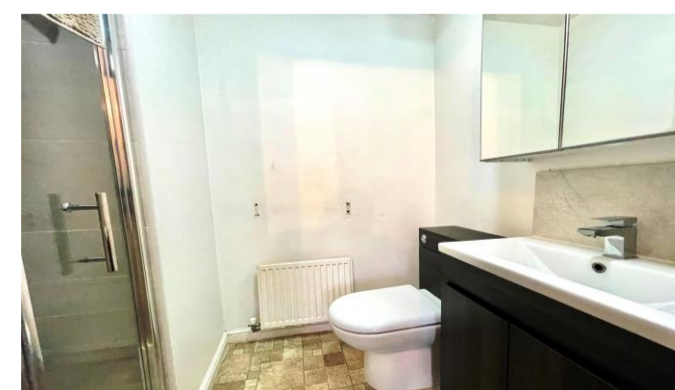
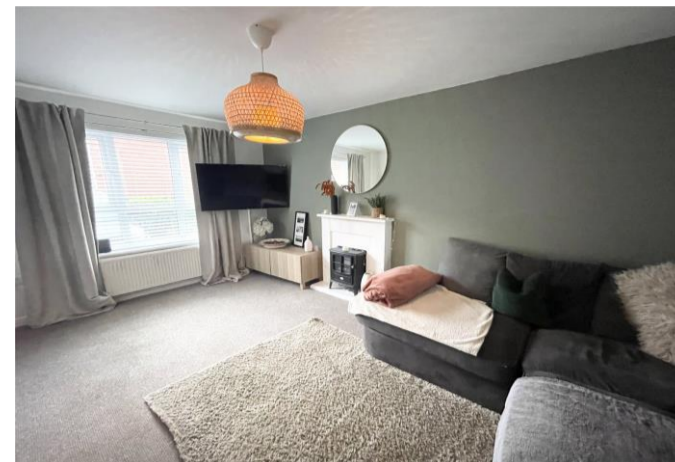
To the exterior of the property there is a Brick Garage plus front and rear Gardens.

The property is situated in a sought after location at the head of a cul-de-sac of similar styled properties, off Martongate, on the northern side of Bridlington. Local amenities include both Primary and Secondary schools, Supermarkets, Library, Public House and Restaurant. The town centre is 1.5 half miles away.

This is, our opinion, a lovely family home in popular residential area - VIEWING HIGHLY RECOMMENDED.

Additional Information

Council tax band B



Opening doors
for over 60 years

Harris Shields
Collection